



Reconnecting to natural life: Chinese migrants' lived experience of responding to gambling harm

Dr Wenli Zhang
Professor Peter Adams

International Gambling Conference
29. June 2022

Content outline

1. Background
2. Focus of the study
3. Methodology
4. Findings
5. Conclusion

Background

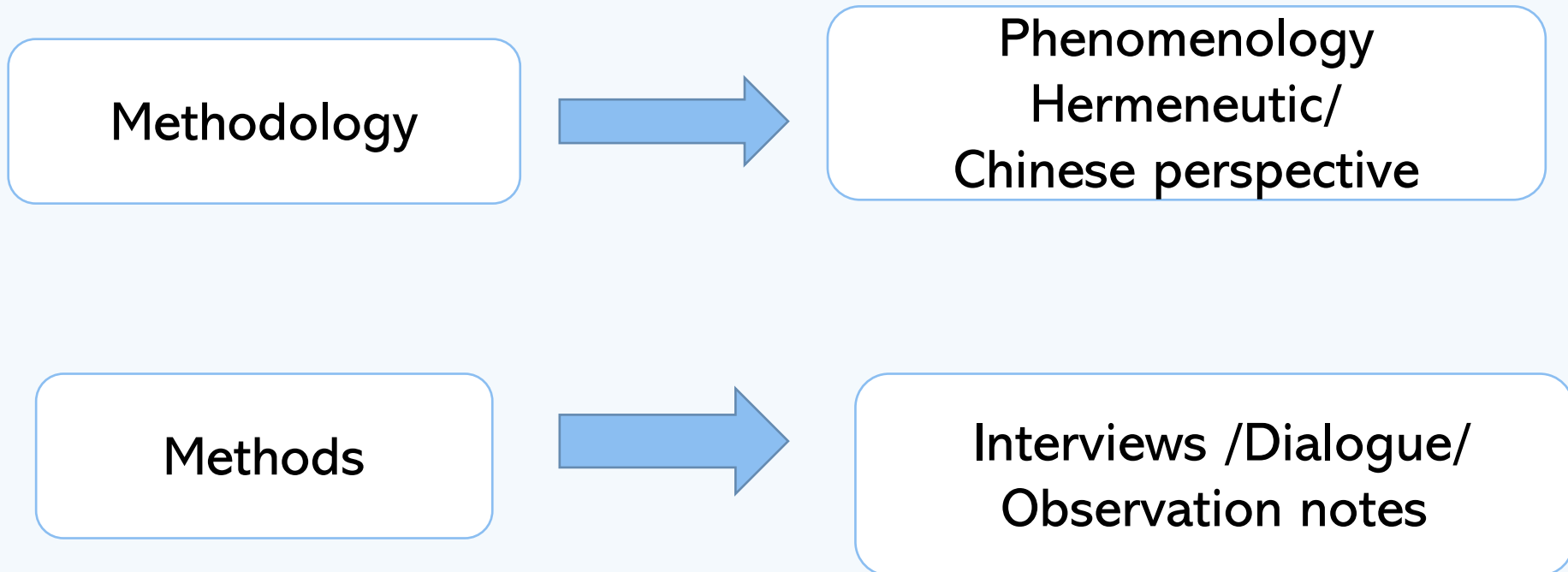
1. Casino gambling is one of the most harmful modes of gambling
2. Gambling is inconsistent with Chinese philosophy and culture
3. Chinese have been observed over-represented in casinos globally
4. Social and cultural factors influence the understanding of problem gambling and treatment strategies
5. Limited (especially qualitative) research on Chinese gambling – also in New Zealand (Abbott et al., 2014)



Research focus

1. Investigating the elements of participants' experience in responding to casino gambling harm
2. Exploring the participants' views on the influential aspects impacting the process of responding to casino gambling harm.

Research design



Ethical approval was granted by the UAHPEC on 24 July 2017

Participants and recruitment

- Chinese migrants from the Chinese mainland after 1990s
- Aged 20 or over, lived in Auckland
- Eight Self-identified ex-problematical gamblers (six male, two female: age range from 30+ to 70)
- Eight affected family members (seven female, one male: daughter, son, wife: age range from 20 to 55+)
- Ethical consideration – voluntary, privacy and prevention
- Recruitment completed between August 2017 and May 2018

Interview procedure

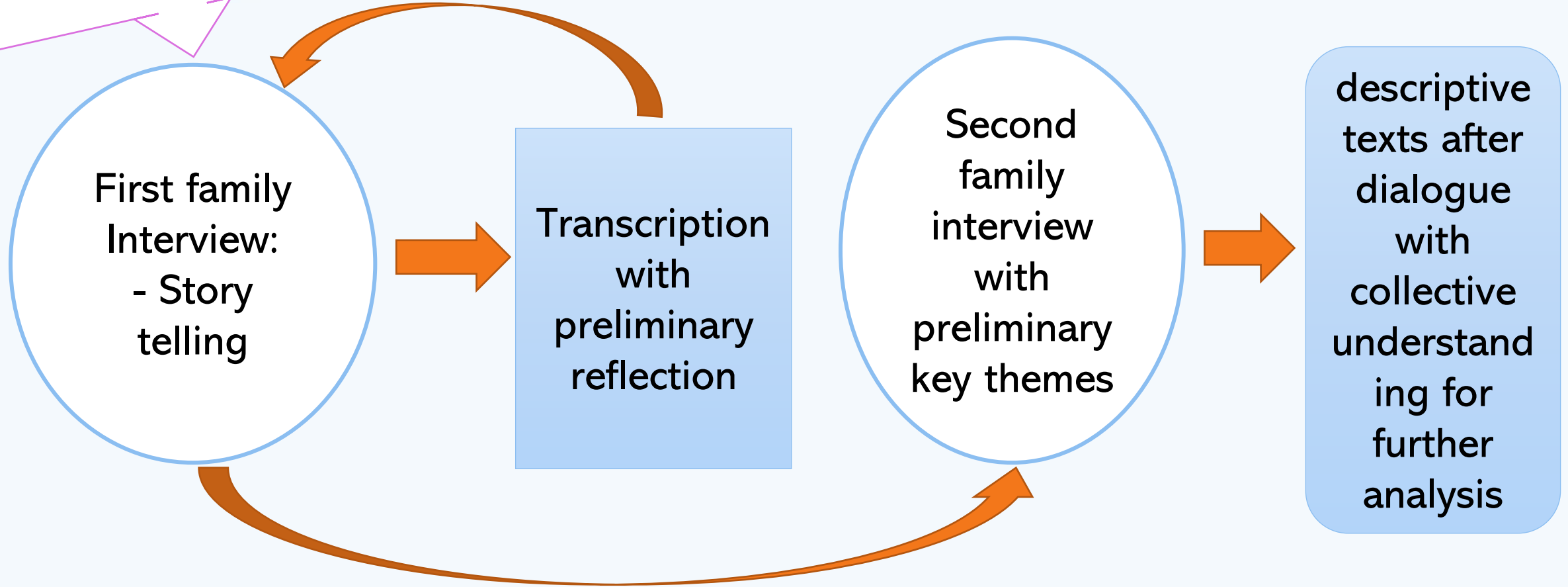
Pilot interviews

First family
Interview:
- Story
telling

Transcription
with
preliminary
reflection

Second
family
interview
with
preliminary
key themes

descriptive
texts after
dialogue
with
collective
understand
ing for
further
analysis



Data analysis stages

Transcriptions
from
interviews

Stage 1
Crafting
anecdotes

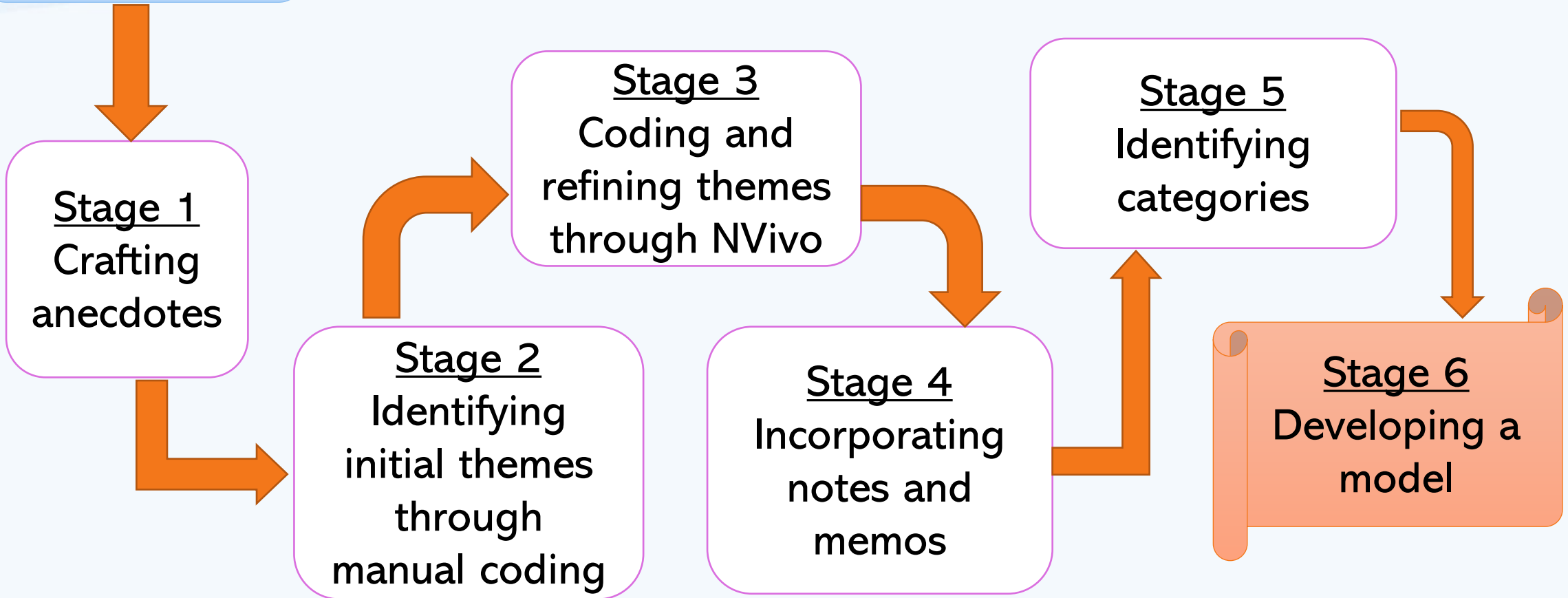
Stage 2
Identifying
initial themes
through
manual coding

Stage 3
Coding and
refining themes
through NVivo

Stage 4
Incorporating
notes and
memos

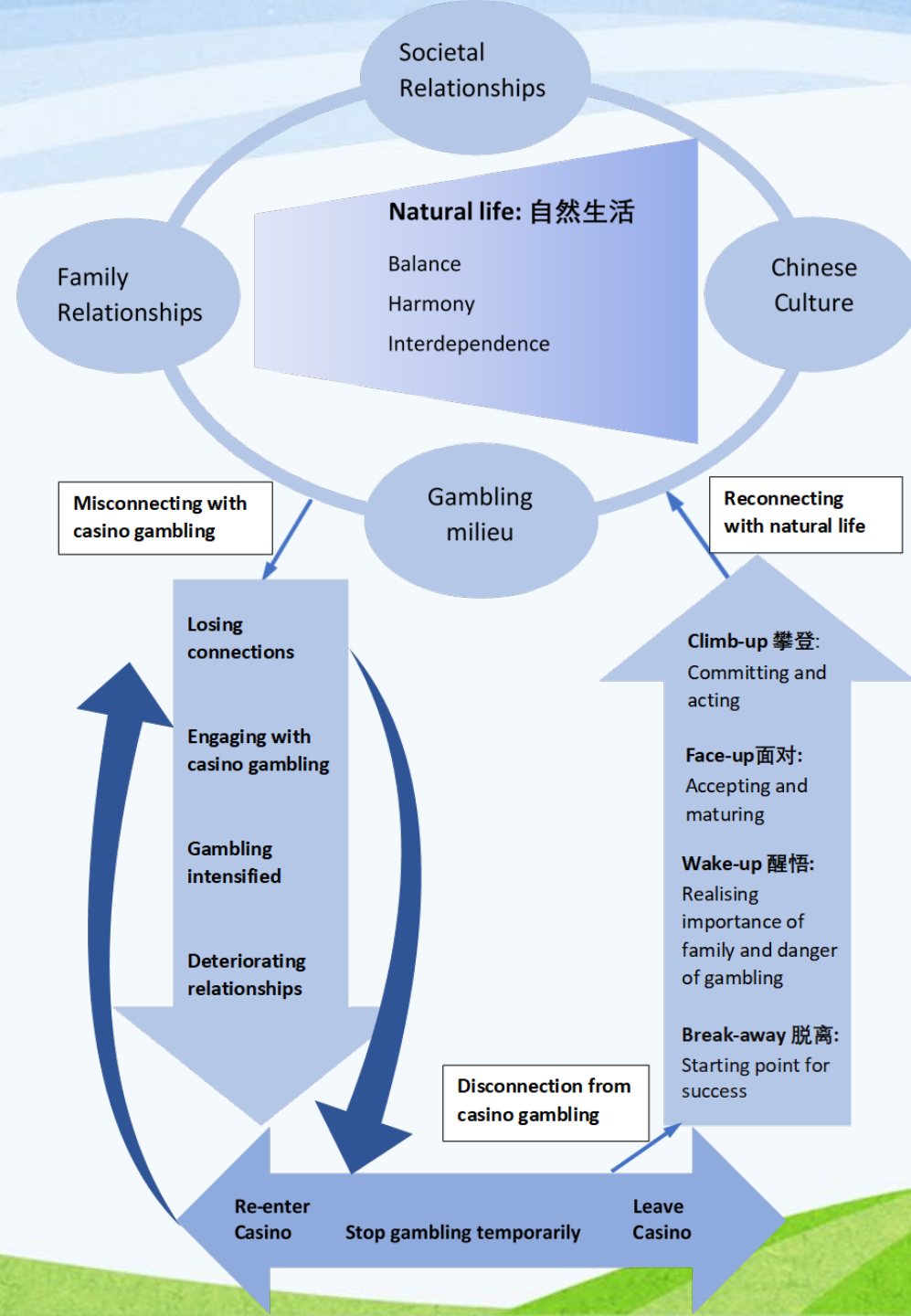
Stage 5
Identifying
categories

Stage 6
Developing a
model



Findings

A process model of Chinese migrants responding to gambling harm



Misconnecting with casino gambling



Disconnecting from casino gambling

**Re-enter
Casino**

Stop gambling temporarily

**Leave
Casino**

**Repeatedly trapped into
gambling-harm vicious circle**

Reconnecting with natural life



Climb-up
Committing and acting

Face-up
Accepting and maturing

Wake-up
Realising importance of
family and danger of
gambling

Break-away
Starting point for success

Natural life

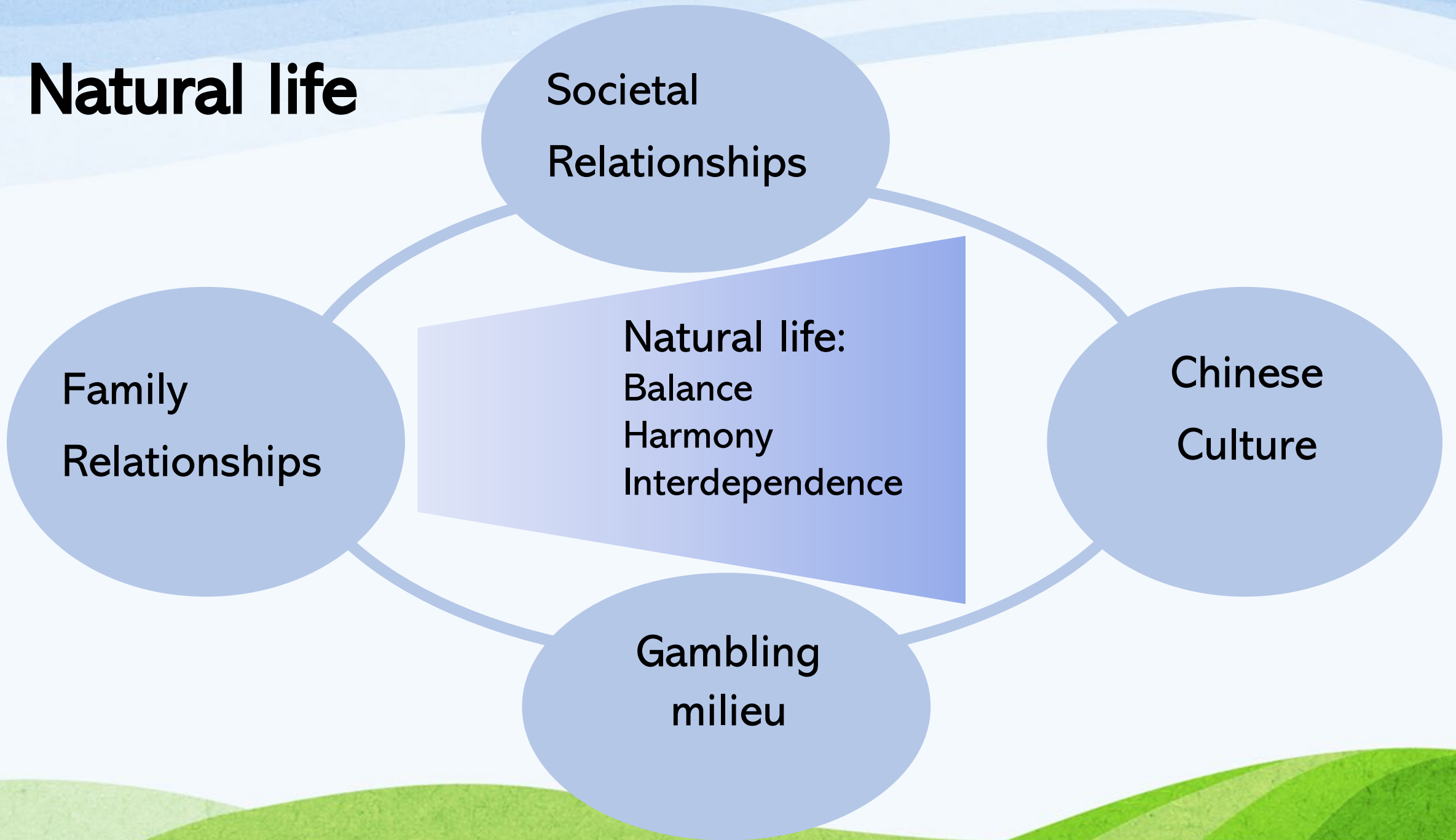
Societal
Relationships

Family
Relationships

Chinese
Culture

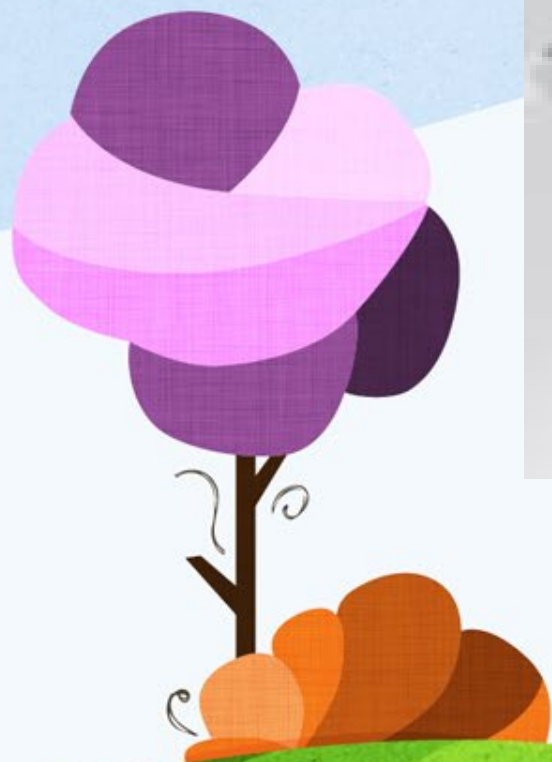
Natural life:
Balance
Harmony
Interdependence

Gambling
milieu



Conclusion

- A significant original contribution to the body of literature related to Chinese migrants' engagement in casino gambling
- Adds cultural insight to some of the existing theoretical frameworks and approaches to gambling harm
- Offers a significant opportunity for Chinese migrants to make their voices heard
- For researcher to understand the meaning of participants' experiences in a social-cultural-historical context



Thank You! 谢谢!