



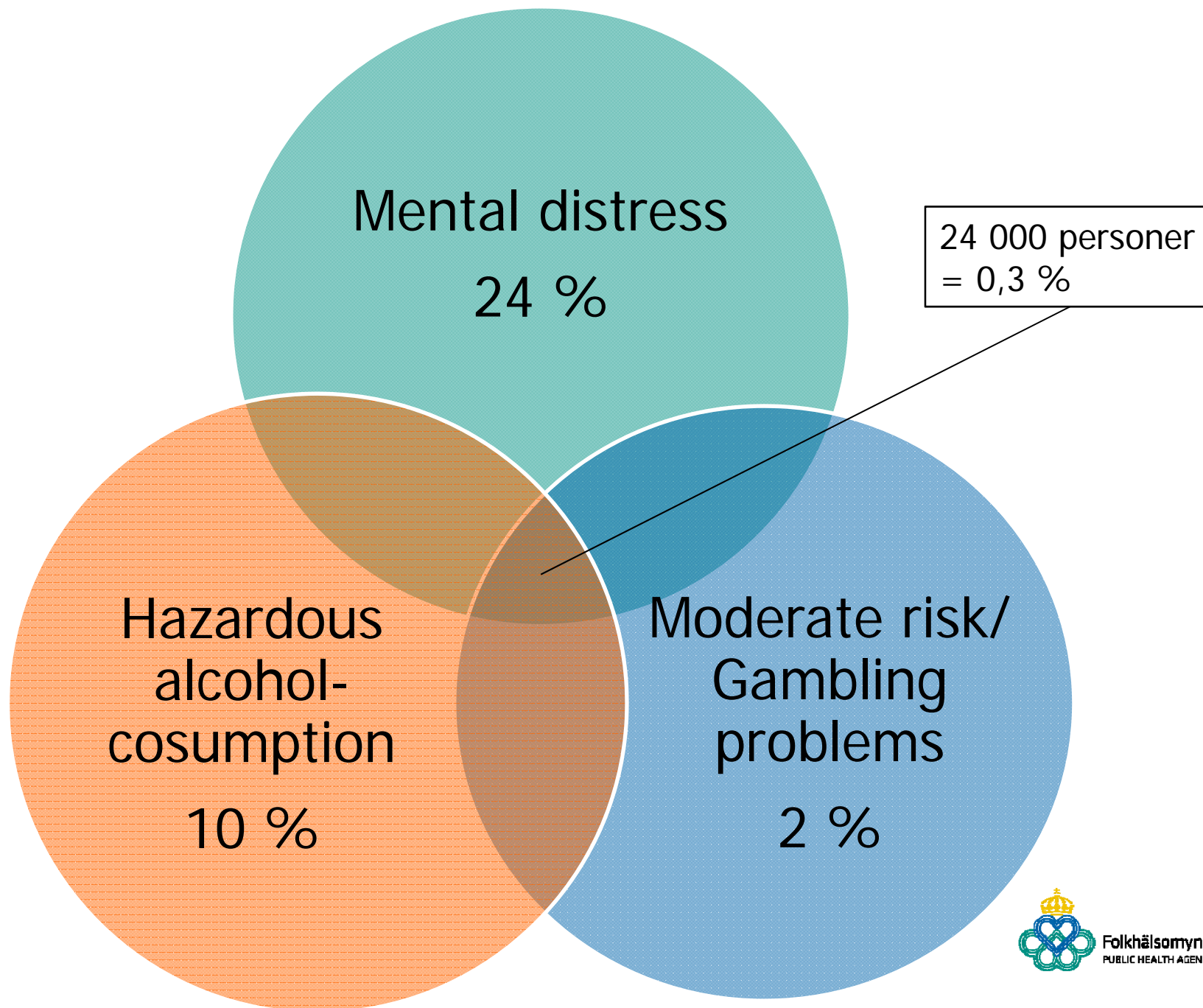
Folkhälsomyndigheten
PUBLIC HEALTH AGENCY OF SWEDEN

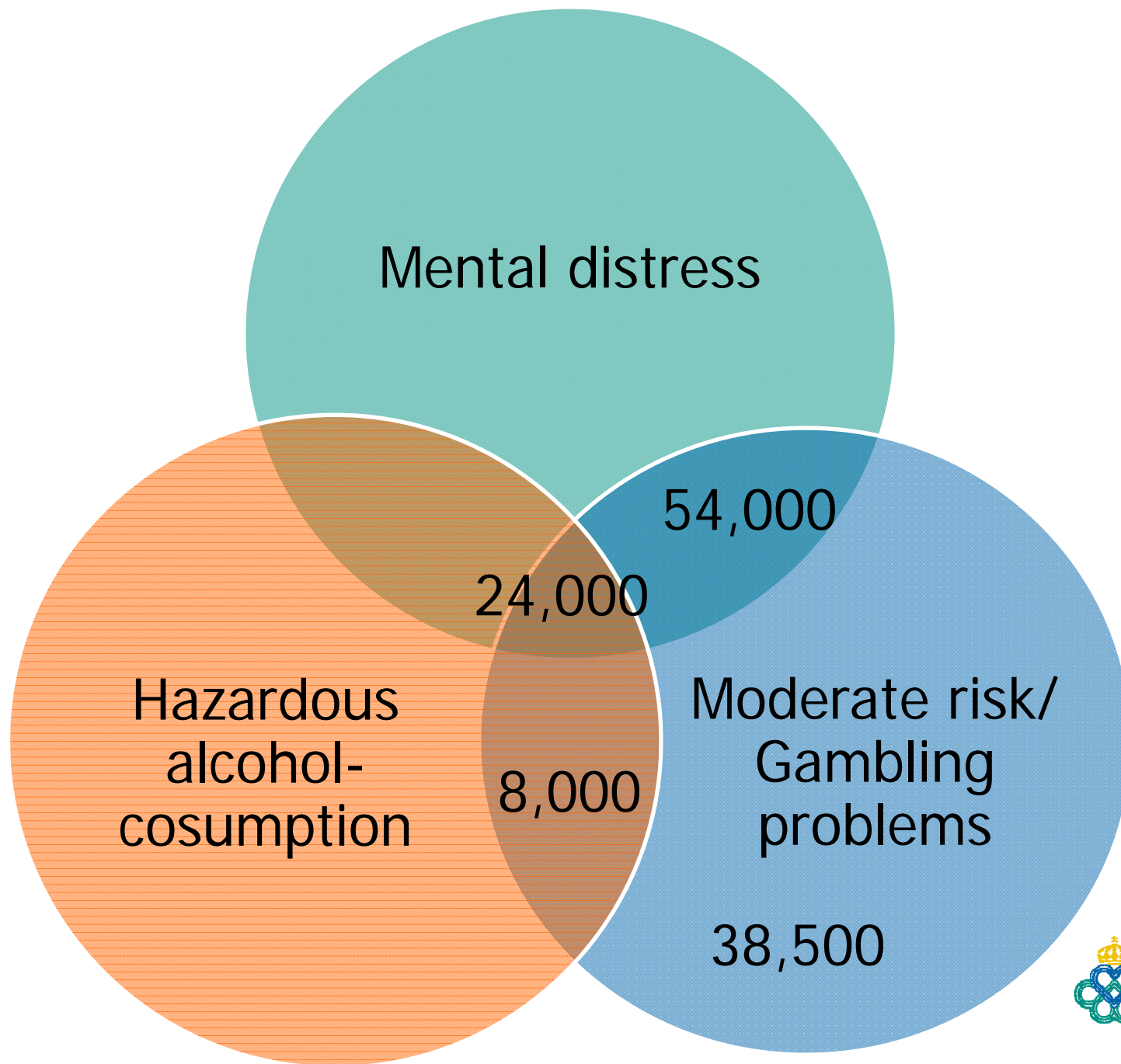
The relations between gambling harms, mental health and risky alcohol consumption over time, the Swedish case

International Gambling Conference
Auckland, New Zealand, 2018

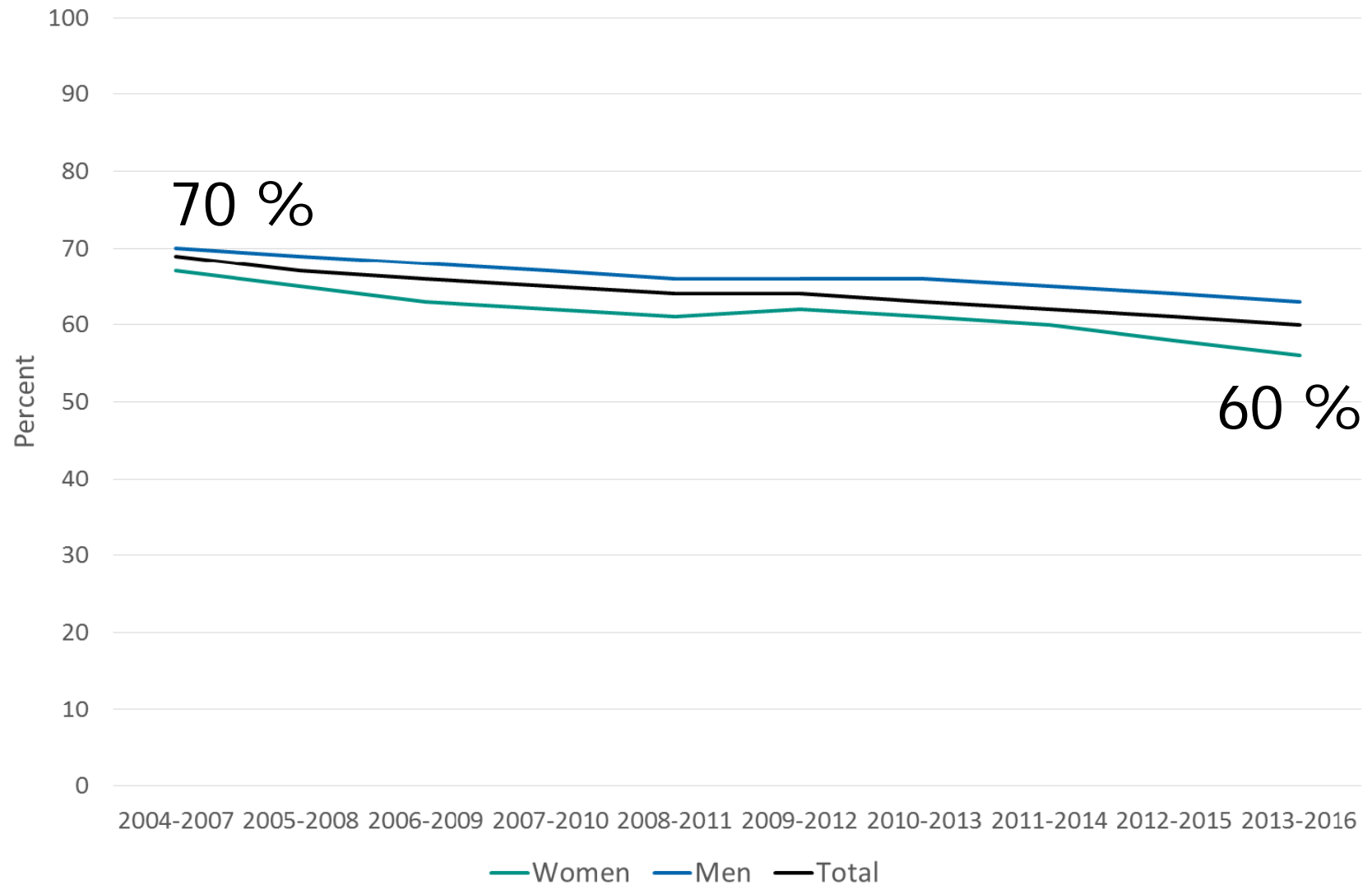
Dr. Ulla Romild, Public Health Agency of Sweden



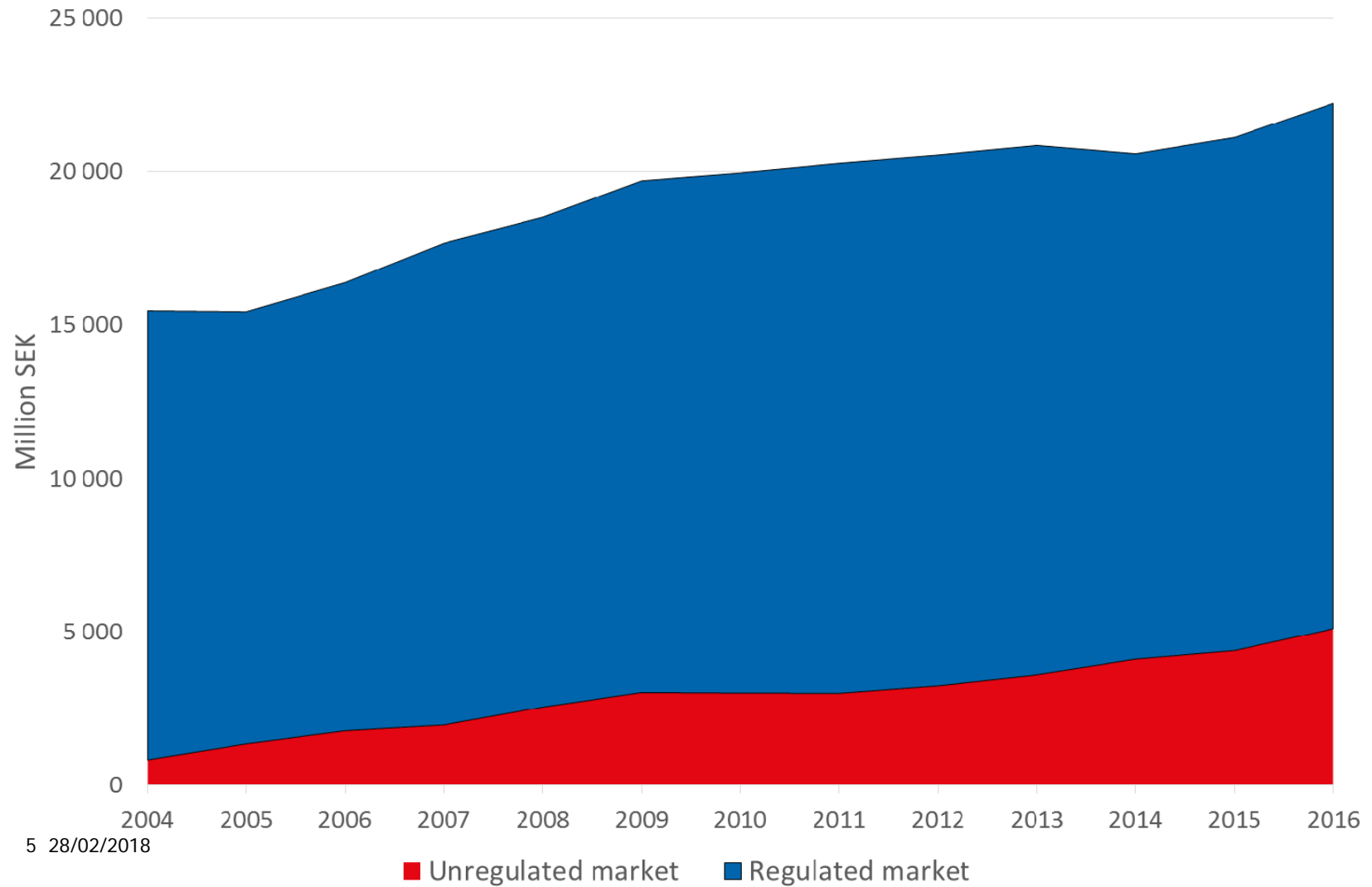




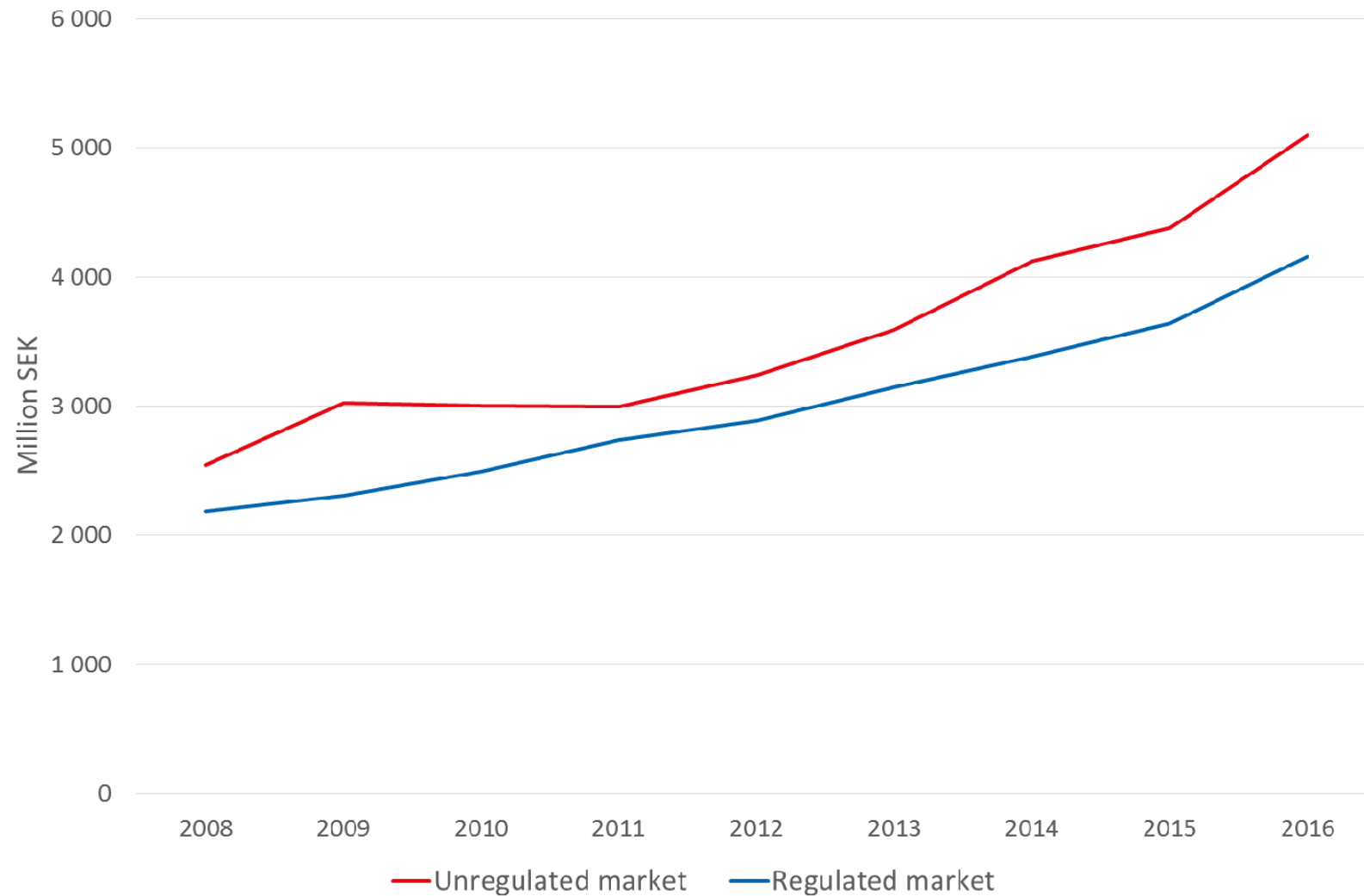
Gambling participation is going down in Sweden



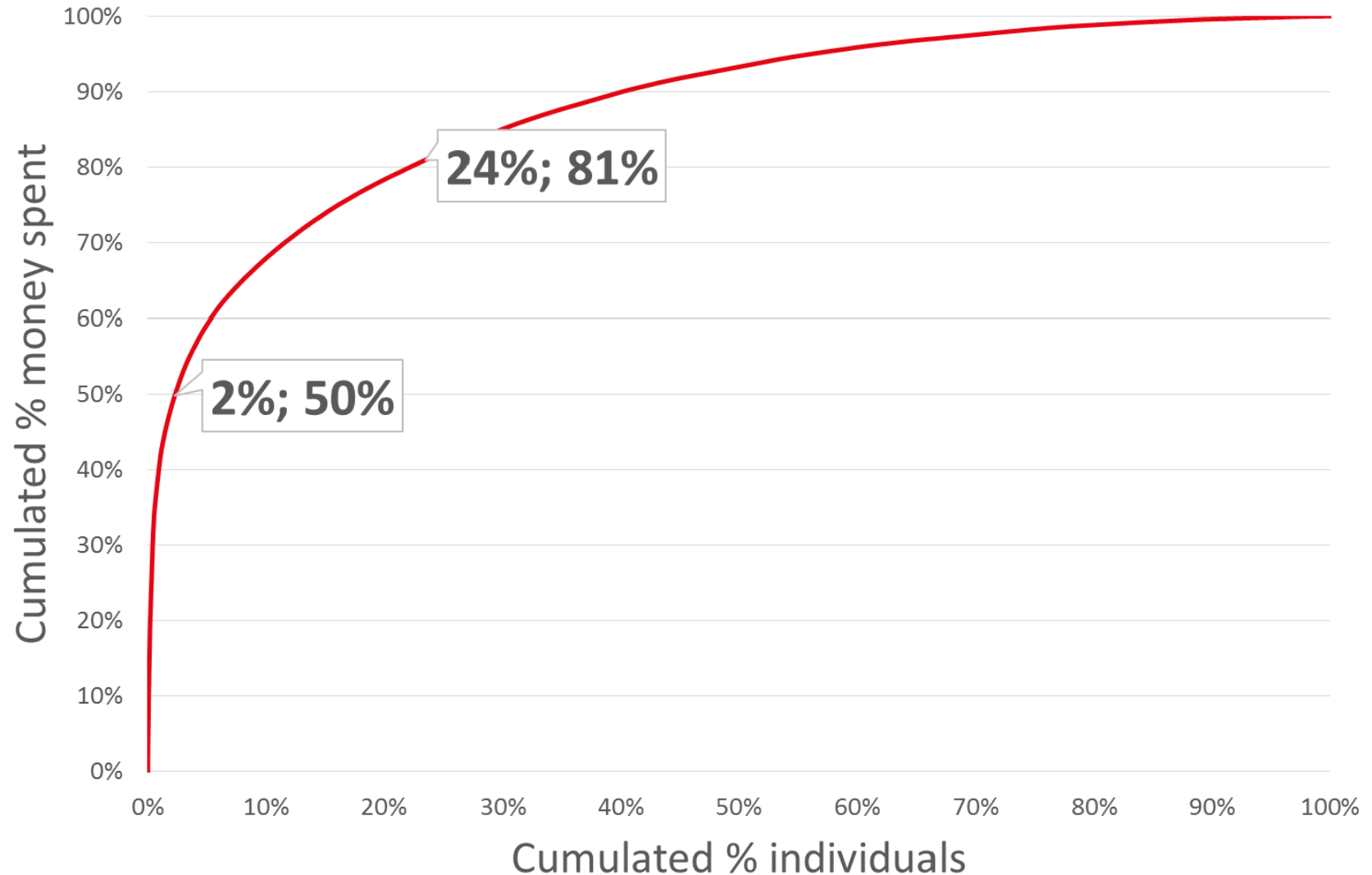
Net Revenue is going up



...and in particular the online gambling

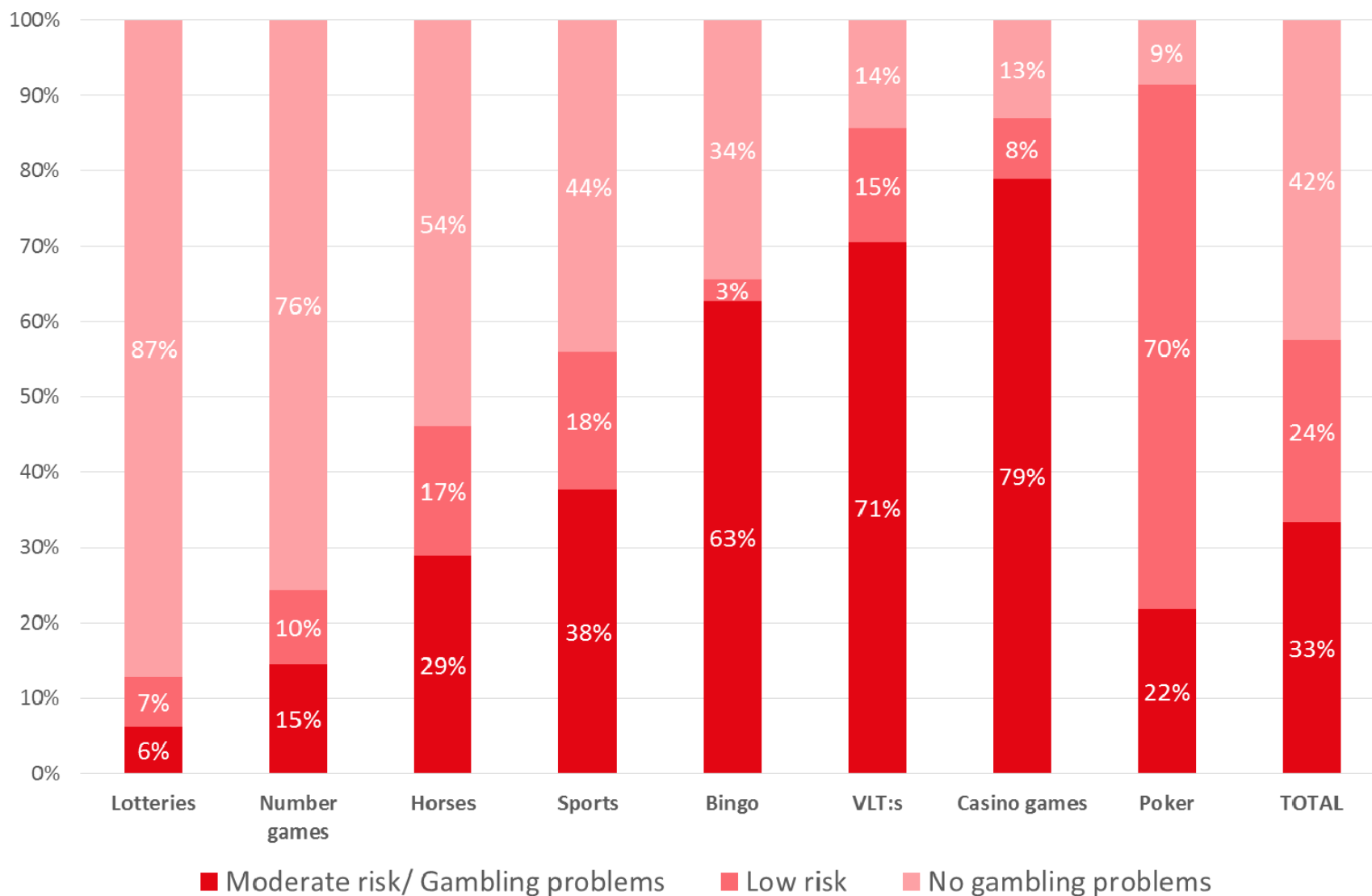


A minority of the gamblers spends the major sum of the total revenue

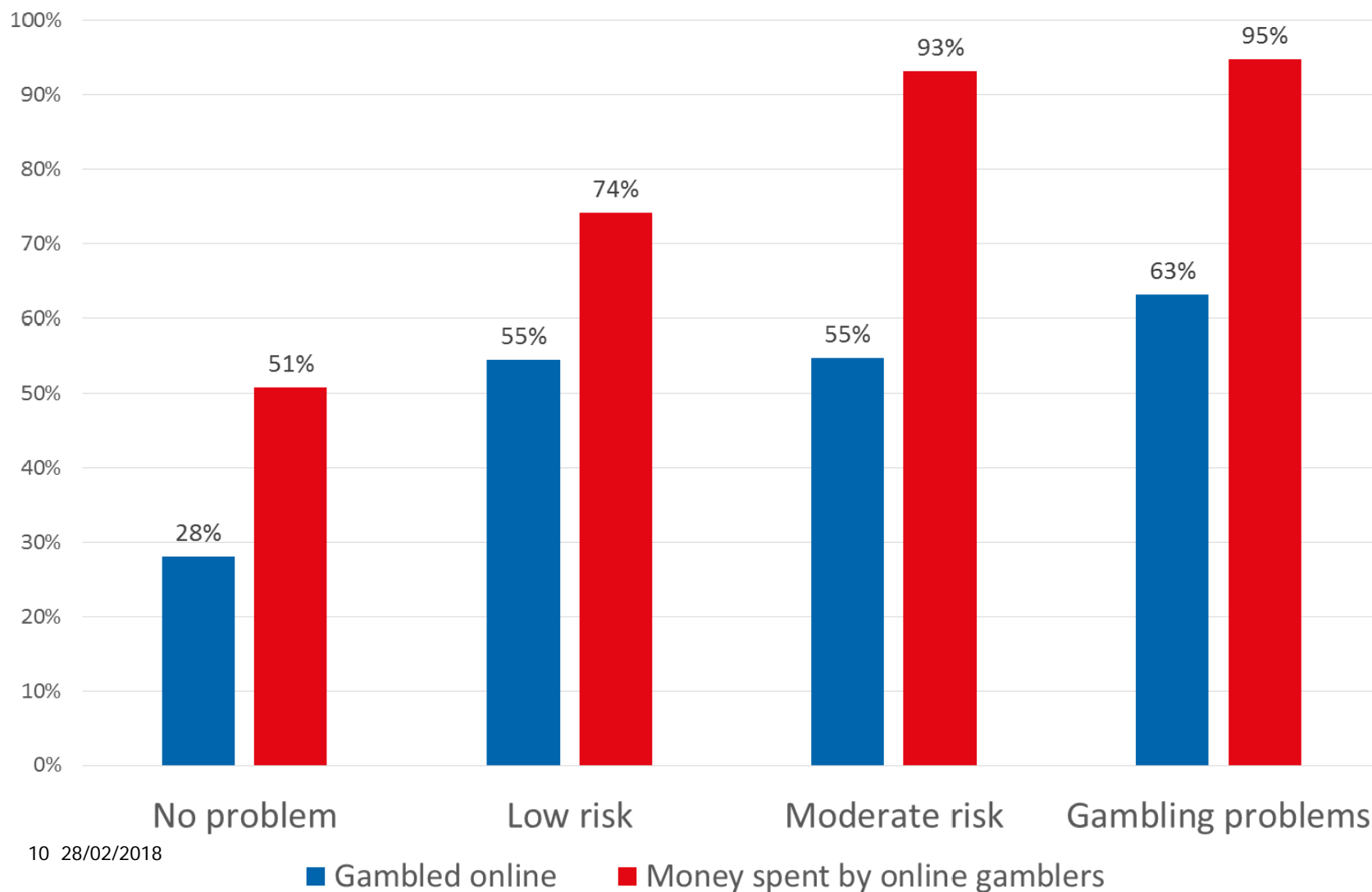


The combined group moderate risk- and gambling problem-gamblers spend 1/3 of the total sum spent on gambling.

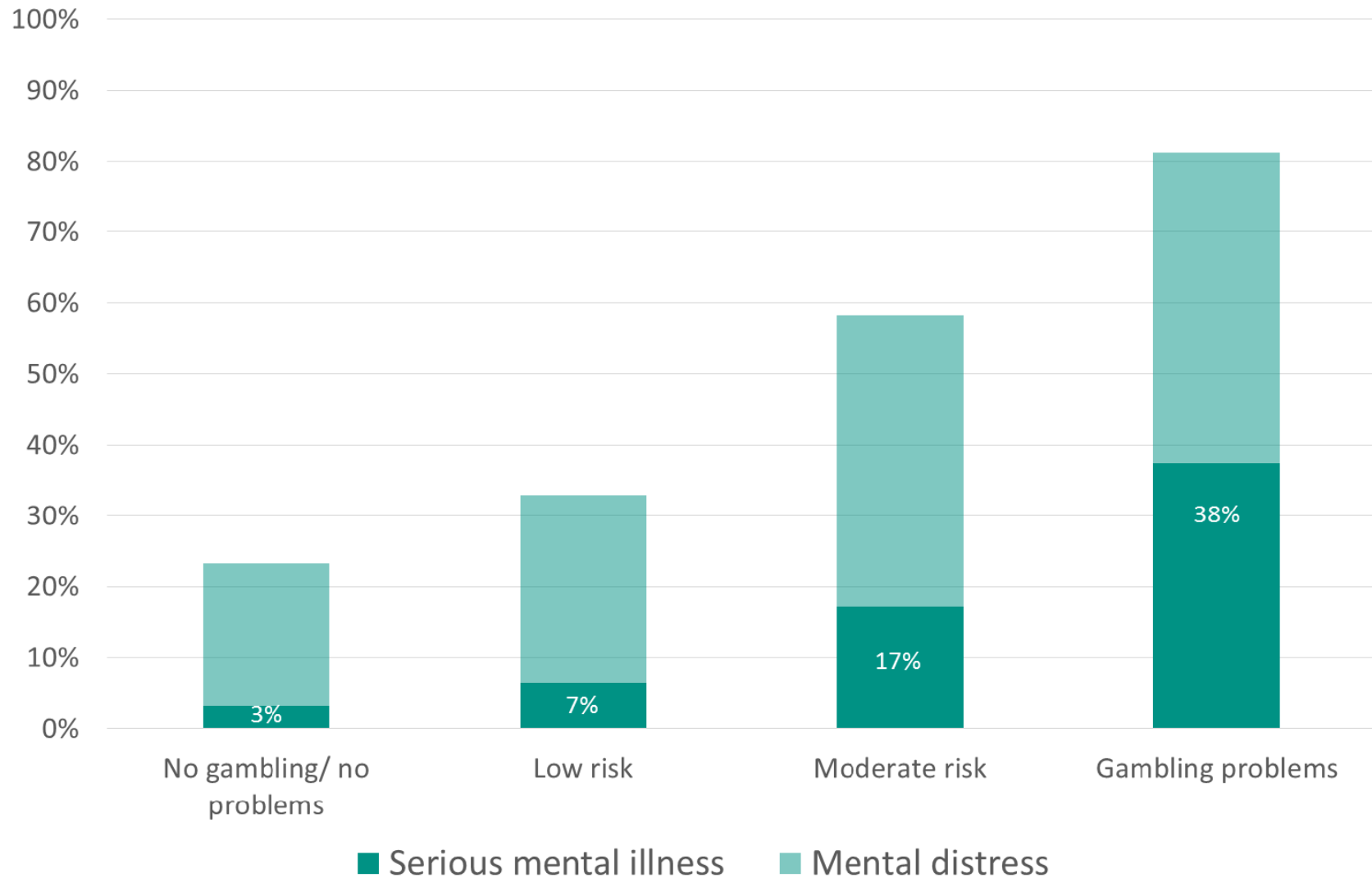
Moderate risk/gambling problem gamblers stake 75% of the total revenue on casino games



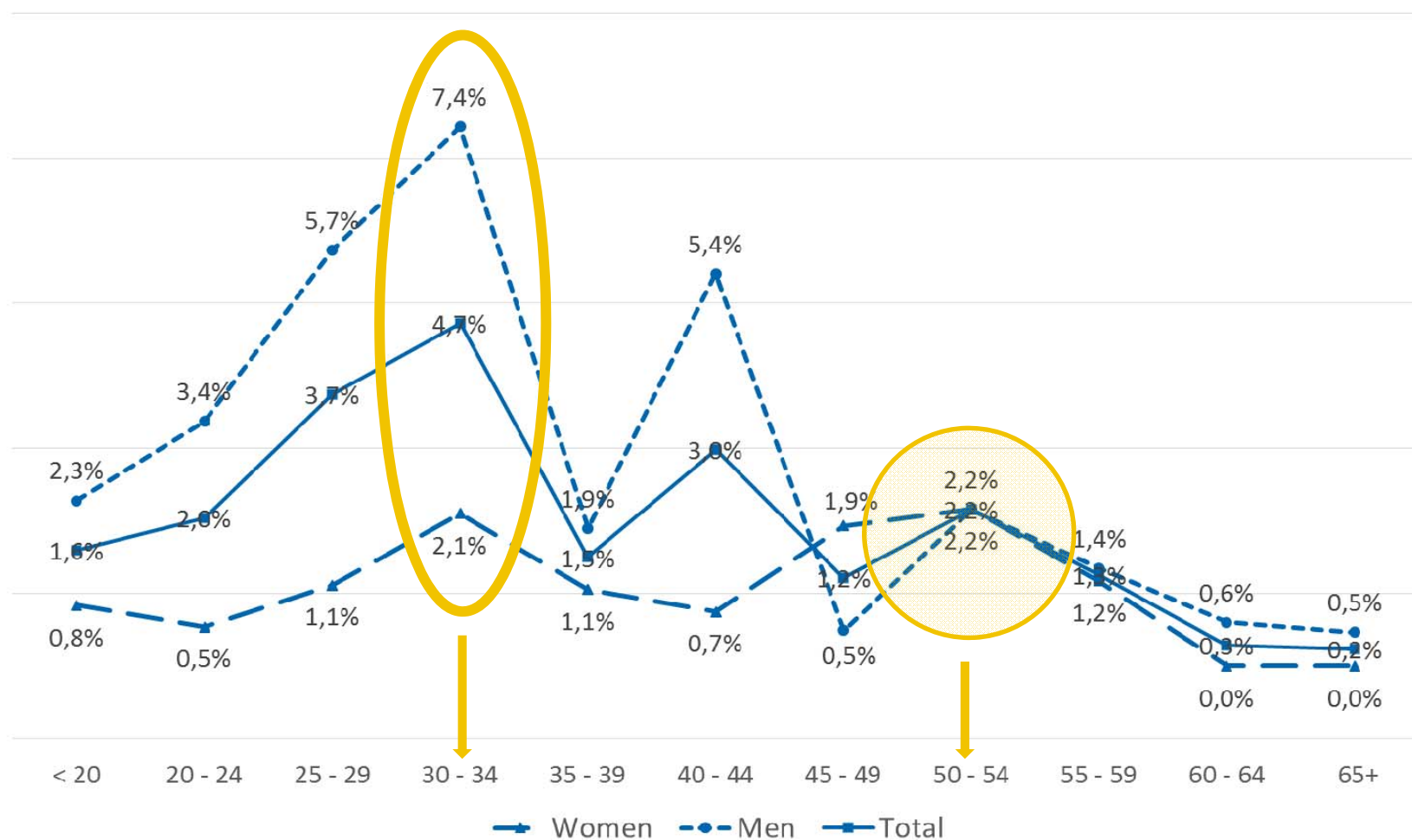
Online gamblers spend more money than landline only gamblers



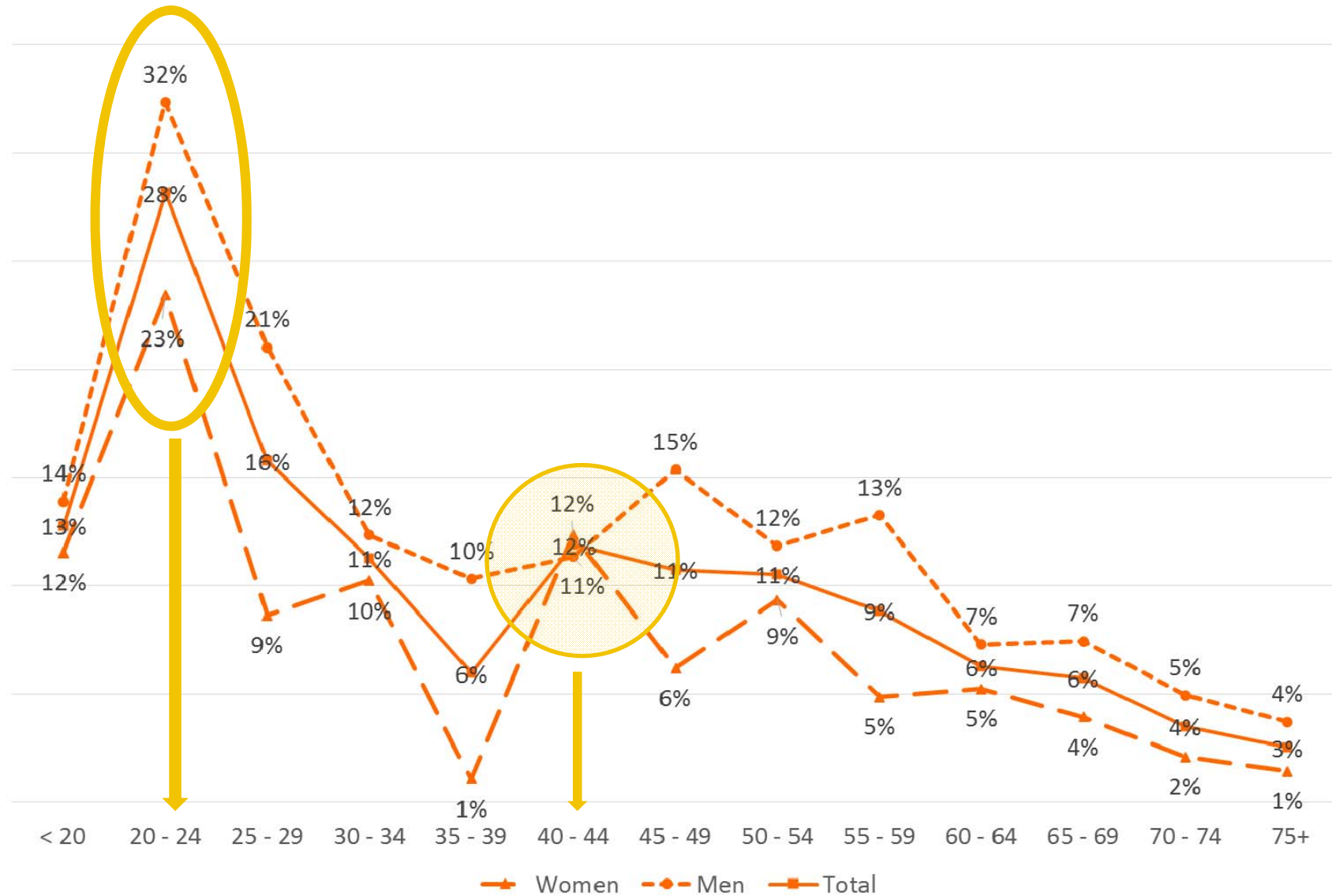
Mental illness depends on gambling problems?



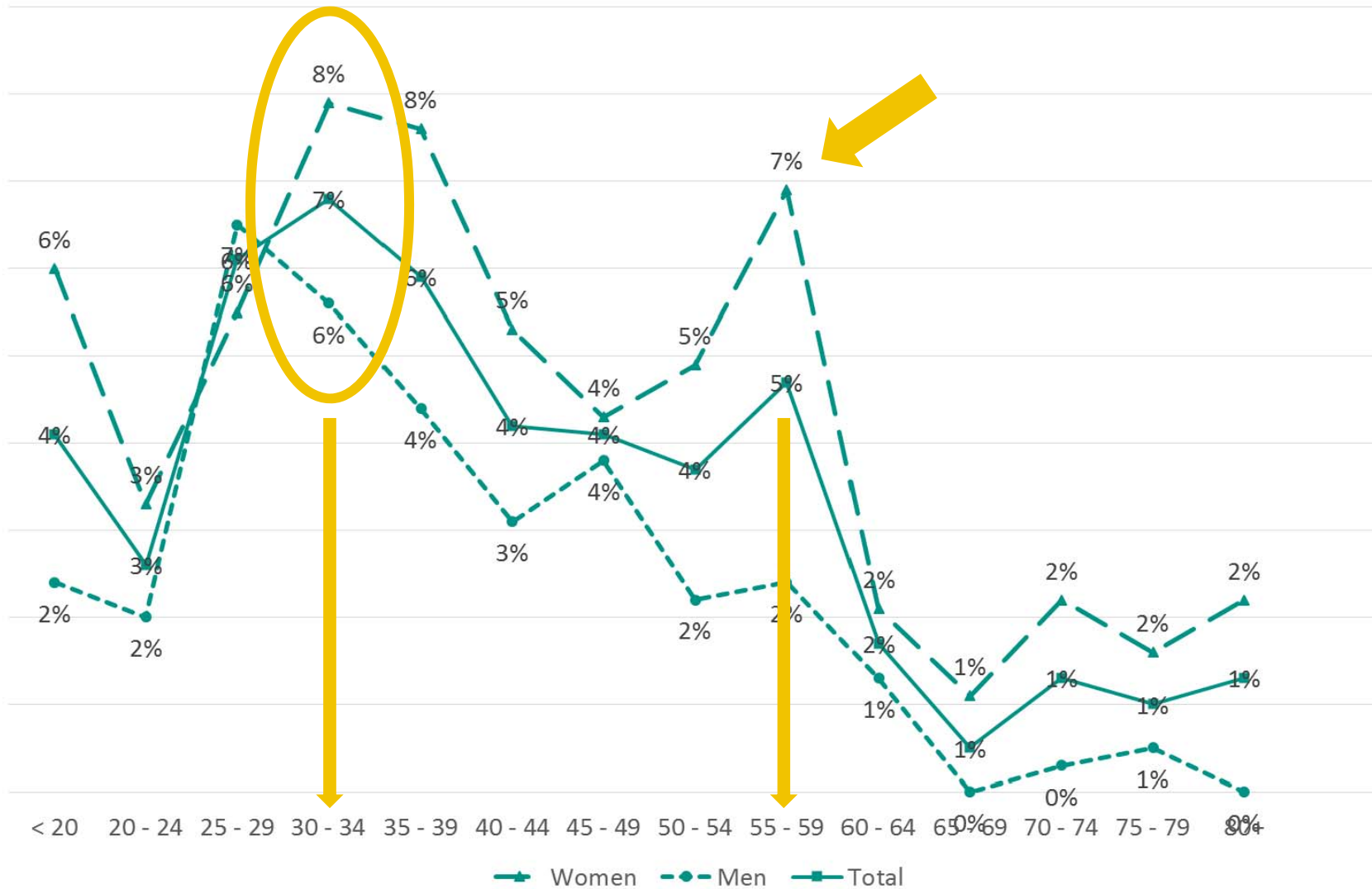
Moderate risk/Gambling problems

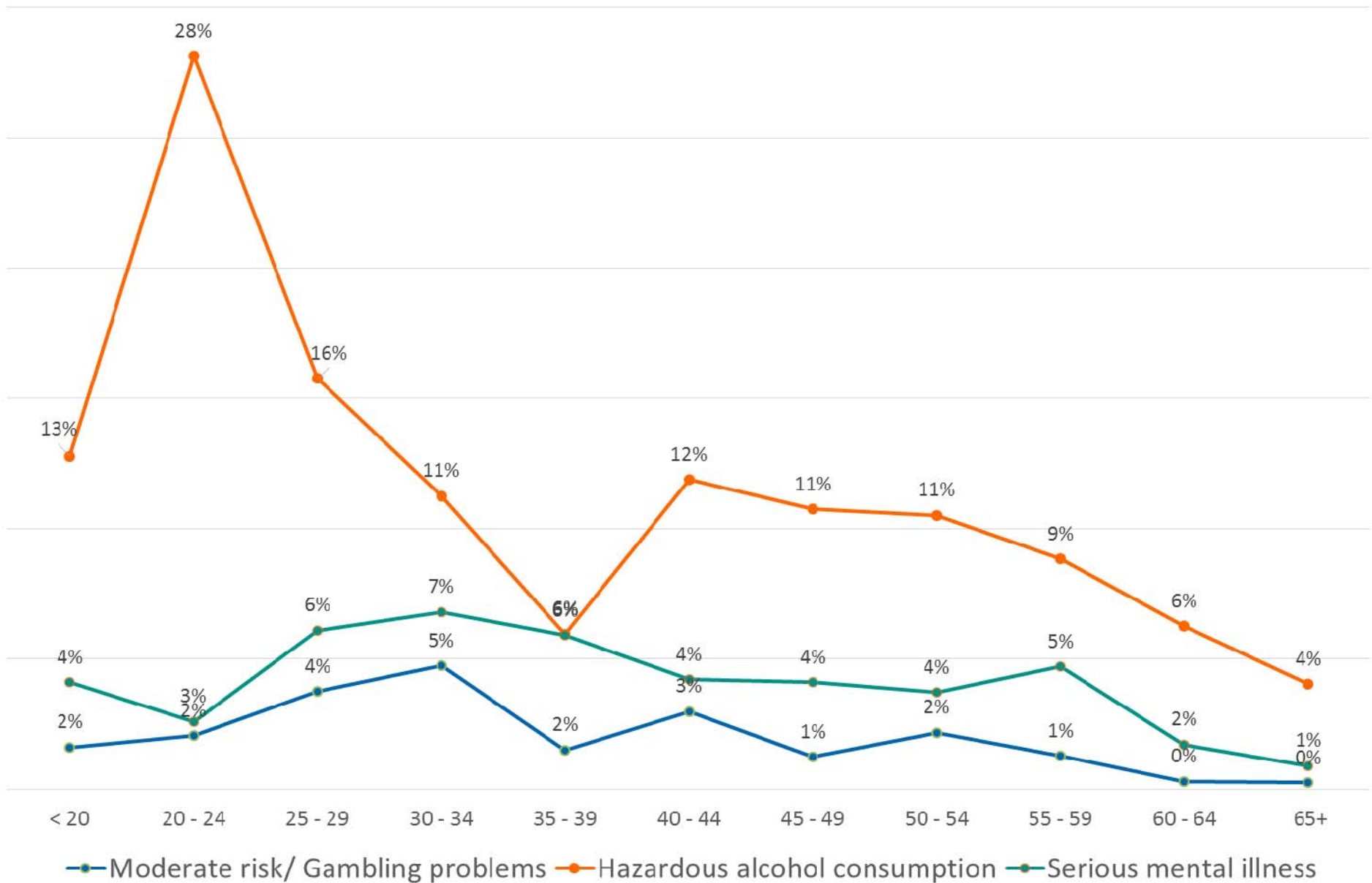


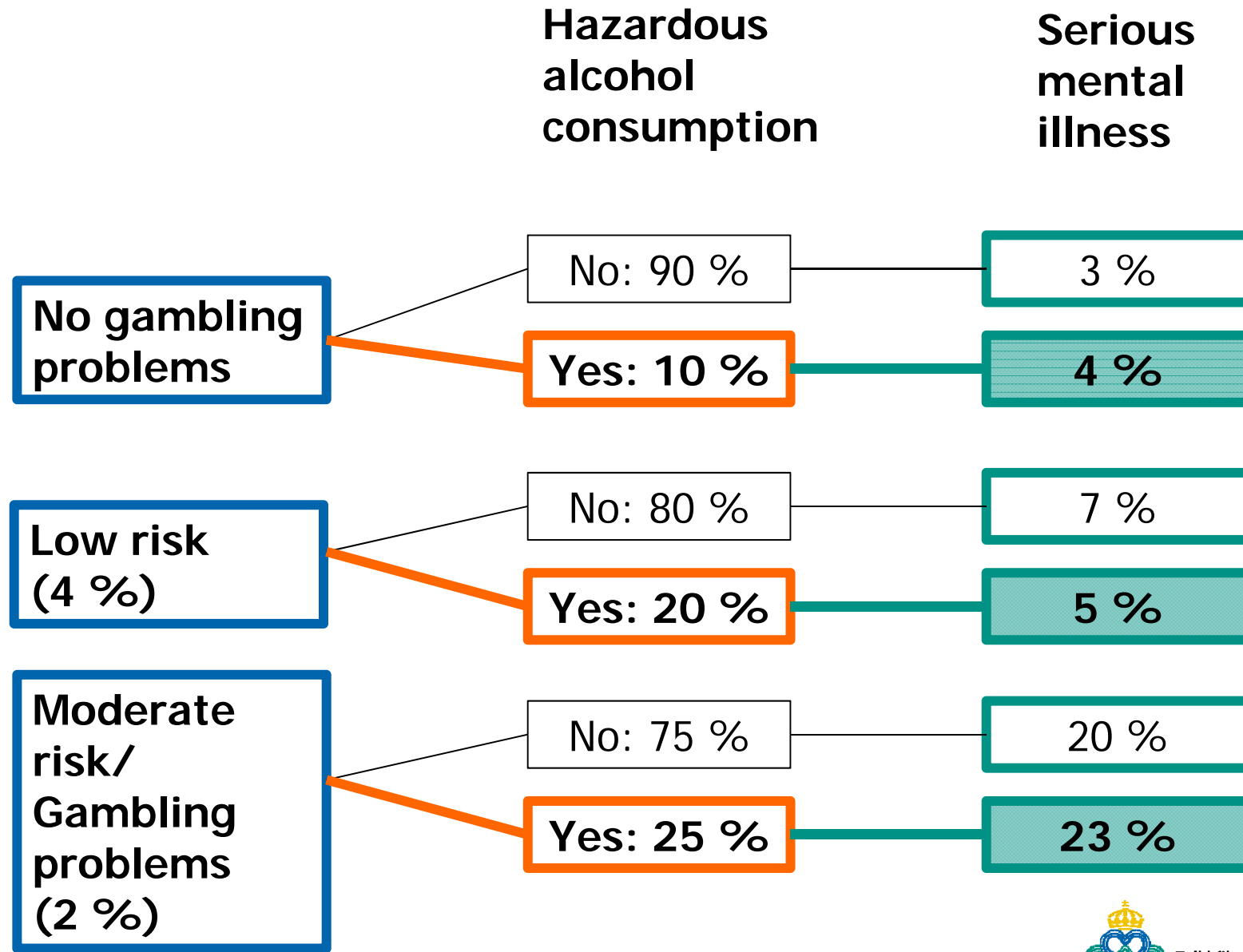
Hazardous alcohol consumption

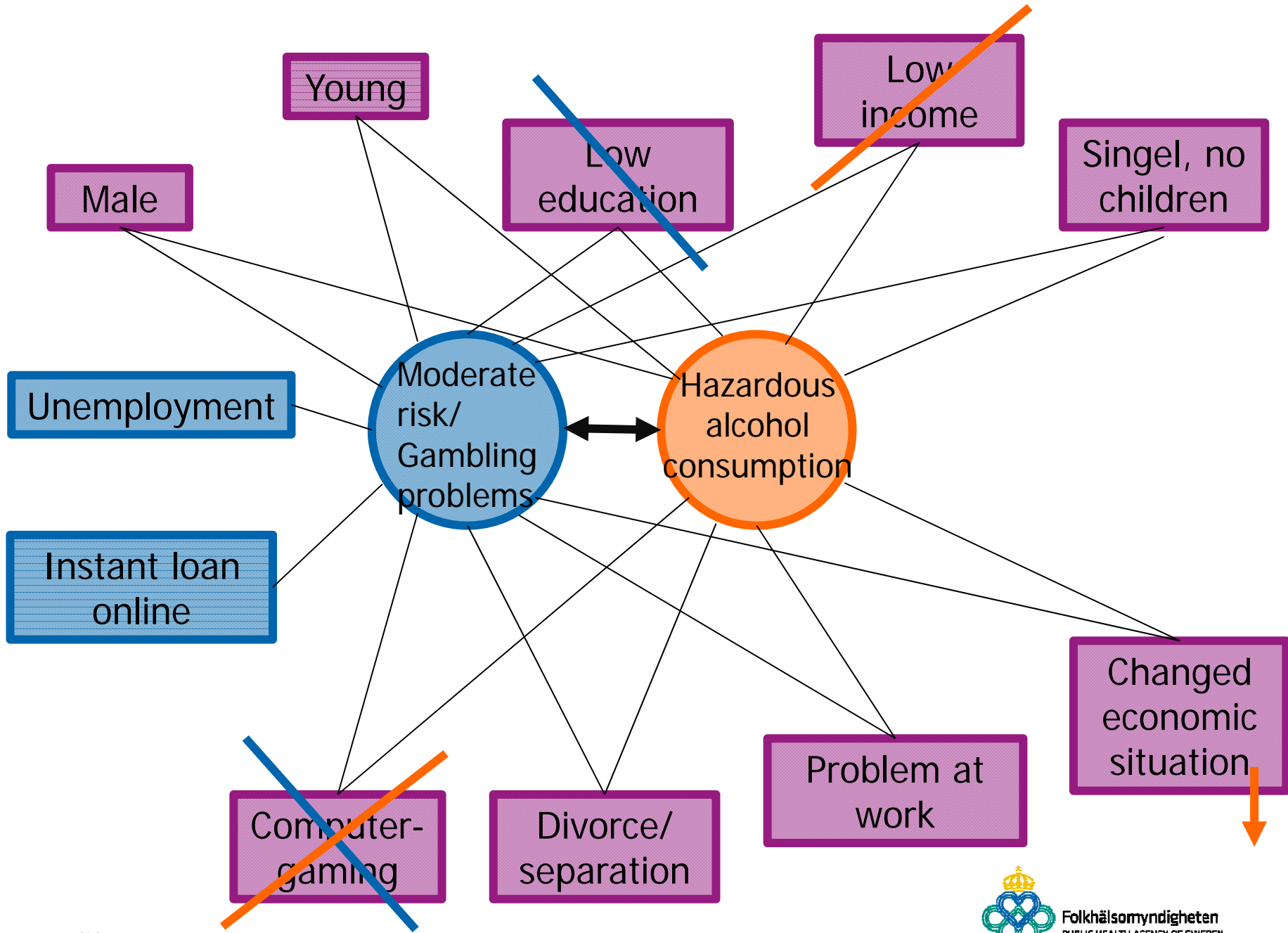


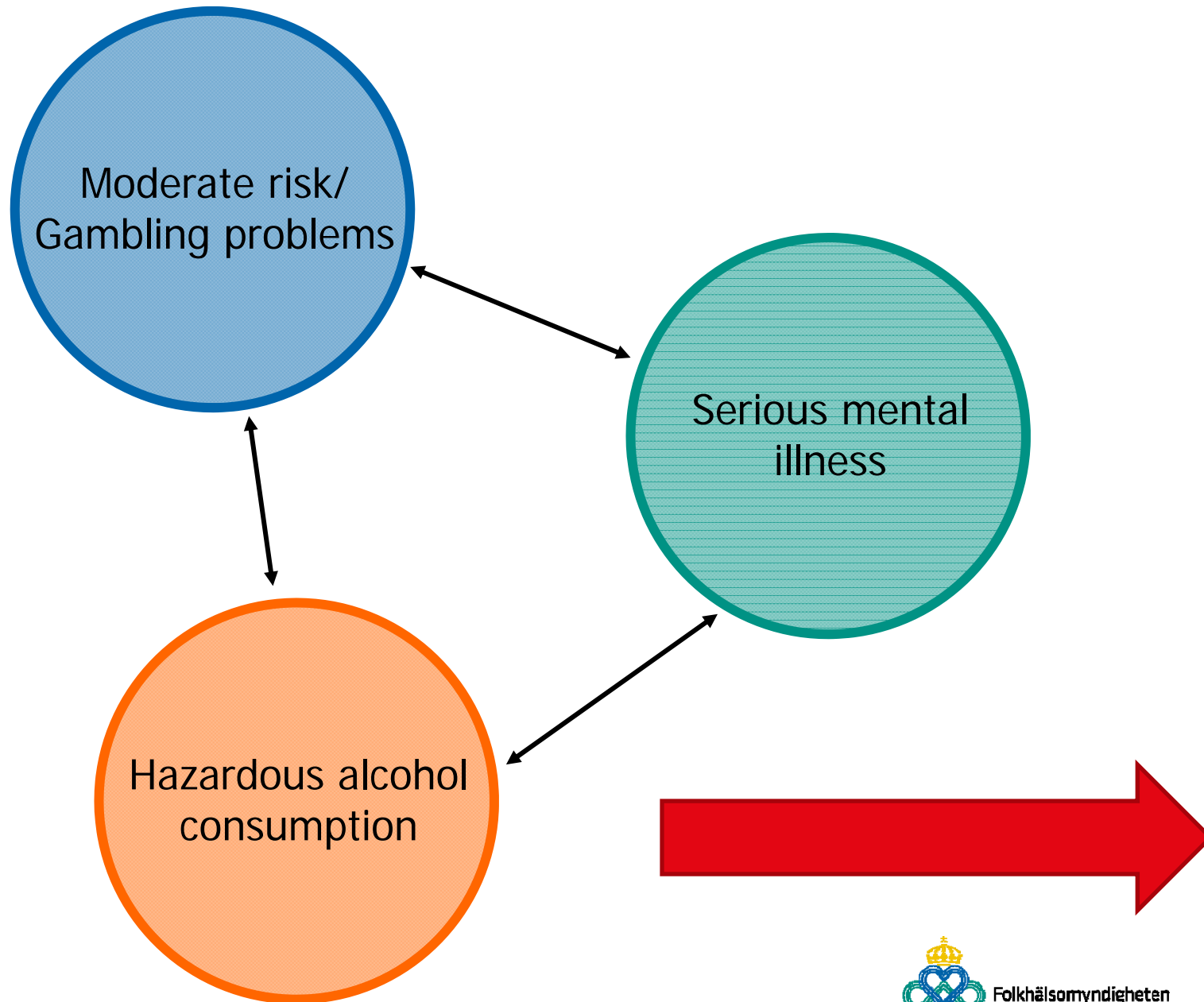
Serious mental illness











Life events of importance for gambling problems

- The death of someone close (OR 1.8)
- Divorce/Separation (OR 2.6)
- Marriage/New relation (OR 1.8)
- Retired (OR 3.9)
- Increased number of arguments (2.2)

Adjusted for Age, Gender, Education and Income



Folkhälsomyndigheten
PUBLIC HEALTH AGENCY OF SWEDEN



Mental distress

